

BLITZCLEAN™ HELMKE DRUM

FEATURES

- Mirror finished both inside and outside
- Variable speed rotation in dial and digital readouts
- Removable inside baffles
- Sealed Motor and Direct Drive Assembly eliminates generation of particulates from the drive mechanism
- Stainless steel base
- Particle counter attached
- Removable cover with product entry opening
- Easily decontaminated and purged
- Quiet operation

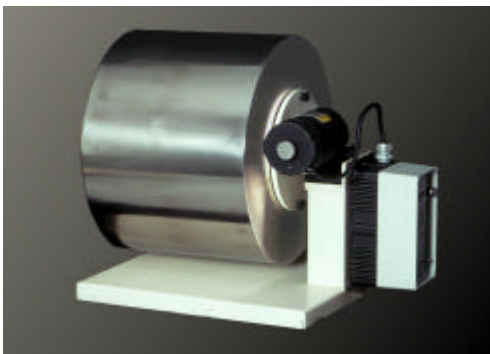
SPECIFICATIONS

- Purged in laminar flow condition
- Contamination levels are measured by a particle counter
- Once background counts have stabilized, the product to be tested is introduced and allowed to tumble inside the drum
- The tumbling motion simulates product usage within the cleanroom
- The change in atmospheric conditions within the drum (particle counter readings) depicts the level of contamination which the product will release into the cleanroom

APPLICATIONS

Blitzclean™ Helmke Drum is excellent for testing of cleanroom apparel, including:

- garments
- caps
- hoods
- masks
- shoecovers
- bags
- wipers
- films
- wraps
- swabs
- gloves



*What is the contamination level of products entering your cleanroom?
Would you like to know before they enter your cleanroom?*

Blitzclean™ Helmke Drum is designed to permit the dissemination of inherent particulates and shedding characteristics of products deemed insuitable for controlled environments.

One should never assume that a product is clean. Through routine testing, one can be assured of the cleanliness of products before cleanroom introduction.

Part Number: BLZ/OO-HYDRUM

Weight	7.8 kg
Power Cable	250 VDC, 13 A
Rotation Speed	104 rpm(Std), from 10 rpmt to 100 rpm (+/- 10 rpm)
Torque	75 lbs
Ratio	33:1
Motor	DCPM Type, Horse Power 1/4
	90 VDC, 2.6 A

ENGINEERING DETAILS

